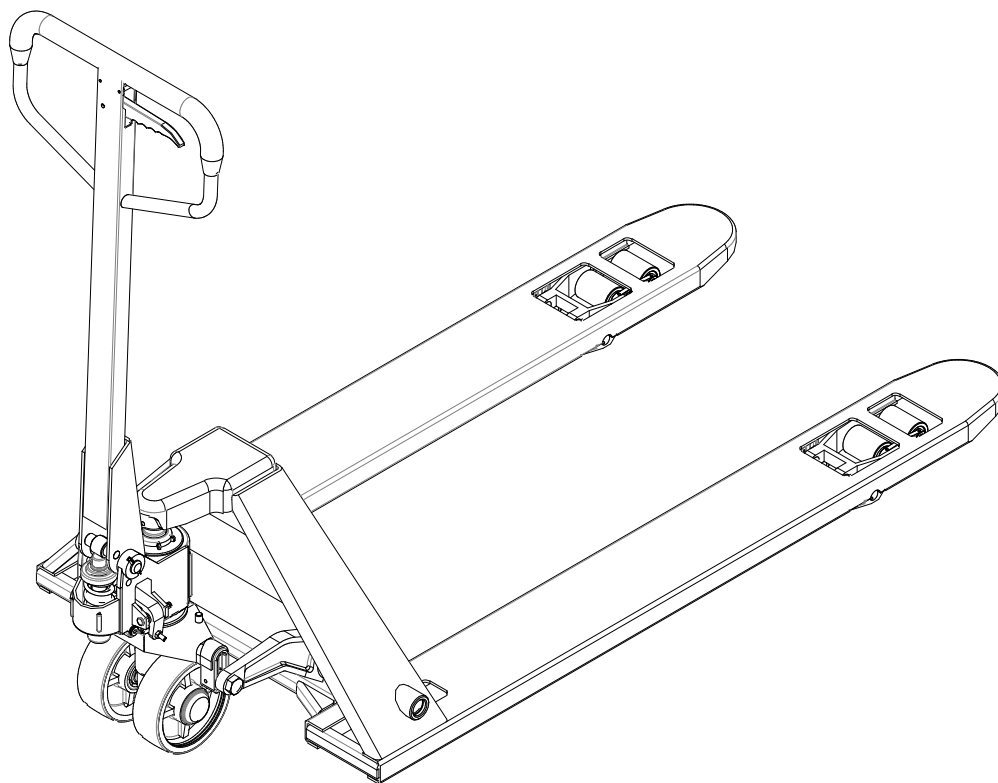


BFL10 Hand Pallet Truck

- Assembly Instructions
- Operations Manual
- Parts Catalog



Note:

1. The BFL10 Hand Pallet Truck shall be used, serviced and repaired according to the manufacturer’s requirements.
2. This truck shall not be modified nor have attachments fitted without ensuring that the truck is still safe.
3. Do not exceed 2200 lbs. (1000 kg) in cargo
4. Operate with more than one person when the cargo’s weight cannot safely be handled by one person.
5. Always be aware of your surroundings, other people, and vehicles in your area.
6. Beware of pinch points on and under the truck
7. Never move unstable loads with the BFL10 Hand Pallet Truck.
8. Only move palletized loads with the BFL10 Hand Pallet Truck.

1. Applicable Range

- 1.1 Hand pallet truck is a low lift transportation tool which is limited to move palletized cargo. This kind of truck possesses the feature of stable lifting, easy operation, safety and reliability.
- 1.2 The working place must be non-slip, hard flat ground without holes or obstacles.
- 1.3 The ambient lighting is 50 lux minimum.

2. Main Specifications

Capacity	2200 lbs.	1000 kg
Max. lift height	4.13 in	105 mm
Lowered fork height	2.00 in	35 mm
Service (Empty) weight	143-176 lbs.	65-80 kg

3. Assembly of hand pallet truck

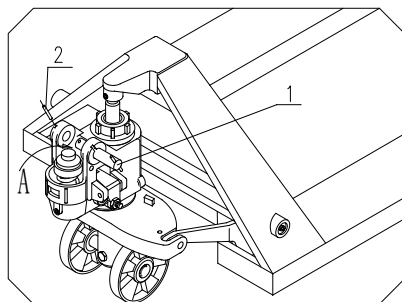


Fig. 1

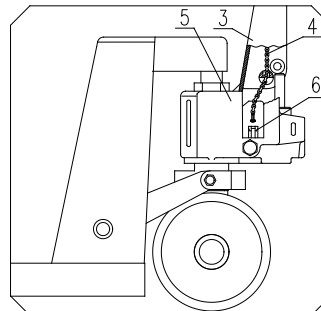


Fig. 2

- 3.1 See Fig 1: Remove Cotter Pin from Pin (1), leave Roll Pin in Pin (1) and remove Pin (1) from pump unit.
- 3.2 Pull Chain (4) out of Handle (3) and lay above roller. Insert the Handle (3) to Reference A.
- 3.3 Attach the Handle (3) and Pump Body (5) by sliding Pin (1) back into position.
- 3.4 Use second Roll Pin (2) included in this package to secure Pin (1).
- 3.5 See Fig 2: Insert Chain (4) through center hole of Pin (1). You may find this easier by allowing the handle to lie horizontal.

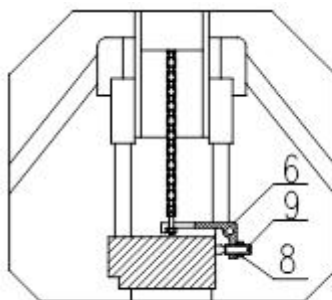


Fig. 3

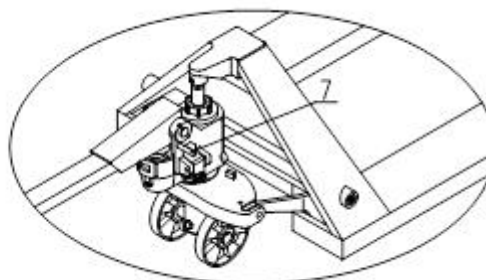


Fig. 4

- 3.6 See Fig 2 and Fig 3: Take screw/nut end of Chain (4) and hitch it under the groove in Lever (6).

3.7 See Fig 4: Push the Handle (3) to a horizontal position, pull out Pin (7) and save for next use.

4. Test of hand pallet truck

4.1 After the truck is assembled, rock the Handle to ensure solid assembly.

4.2 Operate different positions of Control Handle Knob (10) to examine the lifting, free, and lowering positions. Check whether the different positions are operating correctly or not. See Fig 5.

4.2 The Screw (9) in Fig 3 is used to adjust the pump mechanism. When the truck body drops immediately after it is lifted, you should turn the Screw (9) counter-clockwise. And then try the truck again until truck body lifts normally.

If the truck body doesn't drop after it is lifted, you should turn the Screw (9) clockwise. And then try to operate truck again until the truck body drops normally. The Nut (8) at Screw (9) plays the locking function of the adjustment. Tighten the Nut (8) after you finish the adjustment.

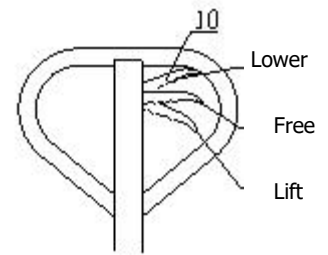


Fig. 5

5. Operation Manual

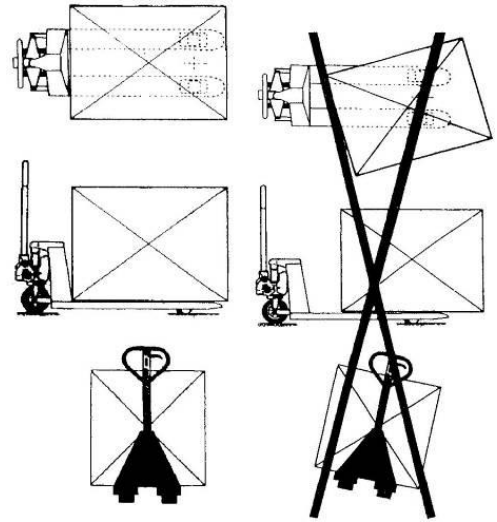
5.1 Before operation of the BFL10 Hand Pallet Truck please make sure the cargo weight does not exceed 3300 lbs. (1500 kg)

5.2 Observe the cargo loading type is shown as Fig 6. Always keep load centered, level and weight centered on the forks.

5.3 See Fig 5: When hand knob 10 is placed on the lift position, the truck will be in a state of lift. At this time, if you rock the Handle the truck will be lifted.

5.4 See Fig 5: When hand knob 10 is placed on the free position, the truck will travel. At this time, if you rock the Handle, the truck will neither lift nor drop. Then, you can use the truck to move the cargo.

5.5 See Fig 5: When the hand knob 10 is placed in the Lower Position, the truck forks will drop automatically.



6. Points for attention and safety norms.

6.1 Operators must put on appropriate work clothes, safety shoes and gloves during the operation of the BFL10 Hand Pallet Truck.

6.2 When the BFL10 Hand Pallet Truck is transported by truck, the truck should be locked in order to prevent the trucks from moving. We suggest using a Hand Pallet Truck Stop similar to Part Number A000044100 or A000033244. Contact your local dealer for availability.

6.3 When the BFL10 Hand Pallet Truck is used for the motor vehicle, the truck must be moved slowly to ensure safety.

6.4 The wheels, bearings and bushings of the truck are wear parts. Please monitor their wear and change them according to situation.

6.5 Do not park the truck on the slope or in emergency passages.

6.6 When the hand pallet truck is used on the slope, the operator should operate the pallet truck carefully to ensure the operator on top of the slope.

6.7 When the BFL10 Hand Pallet Truck is not in use, the forks should be lowered to the lowest position.

6.8 Do not stop the truck on an incline or decline slope.

6.9 Do not park the truck at places where will block the traffic or is inconvenient for work.

6.10 Do not use the truck in rainy environment.

6.11 Do not sit or stand on the hand pallet truck to operate the truck.

6.12 Do not make turns on a slope.

6.13 Do not pile the cargo too high in order to prevent the goods from falling down or overturning of the truck.

6.14 Never use the hand pallet truck to carry people.

6.15 Untrained personnel are not allowed to stand around the operation area in order to avoid injury caused by sudden malfunction.

6.16 Before the hand pallet truck is pushed into the elevator, the operator shall make sure that the elevator can bear the total load of hand pallet truck and cargo as well as the total weight of the operator and other personnel in the elevator. When entering the elevator, people should let the load enter first but not operator. When the load or hand pallet truck enters or leaves the elevator, other personnel should not stay in the elevator.

6.17 The hand pallet truck should be stored in dry and ventilated environment.

6.18 Do not all the cargo weight to exceed 3300 lbs. (1500kg)

6.19 For heavy weights, use two people to operate the hand pallet truck.

7. Inspection

7.1 If the hand pallet truck is not used for a long time, air may get into the hydraulic system. Due to this, the trouble can be eliminated by the following method:

- Turn the hand knob to the drop position and rock the handle for 4 to 6 times.
- Release the operation knob.

If necessary, the process can be repeated for several times until the hand pallet truck can be operated normally.

8. Loading type and rated weight

- 8.1 The rated weight shown on the label is for a center position weight load.
- 8.2 The ideal loading type is that the weight of the cargo is centered in the middle of the truck forks.
- 8.3 The rated weight capacity of the BFL10 Hand Pallet Truck is reduced when the cargo's weight center is not in the middle of the forks.

9. Oil

- 9.1 The oil capacity is about 8 1/2 oz. (250ml).
- 9.2 The original equipment oil is 32# and suitable for a working environment temperature between 23°F to 104°F (-5°C to 40°C). The oil may be changed to a low temperature oil when the working environment temperature between -30°F to 23°F (-35°C to -5°C)

10. Disposal of waste oil

10.1 The waste hydraulic oil shall be disposed in accordance with local laws.

11. Maintenance and upkeep

- 11.1 A routine check should be carried out daily and every abnormality should be dealt with immediately.
- 11.2 Never use a faulty truck
- 11.3 If there are any faults, please contact your local dealer for maintenance and repair.
- 11.4 Only use original parts for repairs.
- 11.5 All the rotating joints should be greased every three months. More often if trucks undergo excessive use or cleaning.
- 11.6 Pay extra attention to the area between wheels and axles. Make sure there are not any foreign materials in these areas which could impede the normal operation of the wheels.
- 11.7 Please keep record of any maintenance and repairs in the list below:

Maintenance Record

Serial # _____

Date	Faults	Parts replaced	Sign

12. Troubleshooting

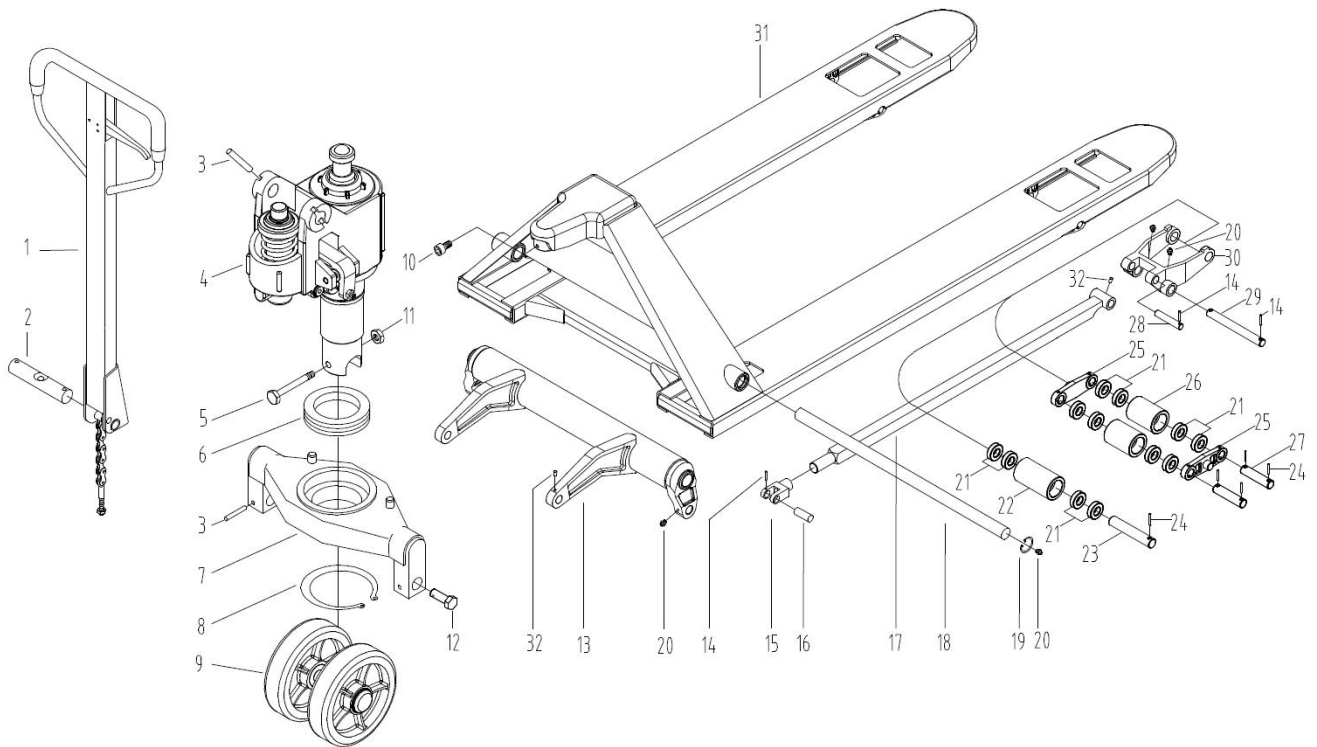
No.	Problem	Possible Causes	Trouble shooting
1	The forks cannot be lifted to the maximum lift height	Low Hydraulic Oil	Add appropriate clean hydraulic oil.
2	The forks do not return to the lowest position.	1. Too much hydraulic oil. 2. The rotating lift parts are deformed or blocked. 3. The pump piston and guides bushing are blocked.	1. Remove excess hydraulic oil. 2. Replace worn/broken parts.
3	The forks do not drop after lifted.	1. There is something abnormal in the unloading device. 2. The parts are deformed and damaged.	1. Readjust the unloading device, see item 4.2. 2. Replace the deformed and damaged parts.
4	Hydraulic oil leakage	1. Coupled parts become loosened. 2. An oil seal is compromised. 3. The surface of some parts is damaged or worn.	1. Fasten the loosened place again. 2. Replace the oil seals. 3. Replace the damaged parts or pump.
5	The forks cannot be lifted.	1. There is something abnormal in the pump mechanism. 2. The viscosity of the working oil is too high, or there is no working oil. 3. There is impurity in the oil.	1. Readjust the unloading device, see item 4.2. 2. Replace the hydraulic oil. 3. Remove and replace the hydraulic oil.
6	The forks drop immediately after being lifted.	The oil pump valve is blocked by foreign matter.	Open the valve and take out the parts. Then re-install the parts after they are cleaned.

13. Notice!!

- 13.1 Please read the operation instruction carefully before you operate the hand pallet truck and learn about all the features of this type of hand pallet truck.
- 13.2 If you want to let the truck down by controlling the hand knob, you should better lift the hand knob a little at first, and then let the truck down slowly. Do not pull the handle knob with great force, because rapid dropping could cause damage to the hand pallet truck and cargo.
- 13.3 Don't rock the Handle at a high speed and in a high frequency!
- 13.4 Don't load the cargo at a high speed!
- 13.5 Do not overload the forks. Overloading could keep the hand pallet truck from working normally.
- 13.6 The center of gravity of the cargo should be in the middle of the forks. Offset cargo could make hand pallet truck out of balance!
- 13.7 Don't load loose or unstable goods!
- 13.8 Don't put the goods on the truck fork for a long time!
- 13.9 When the truck does not work, make sure that the truck forks are on the lowest position.
- 13.10 It is forbidden to load people and let them stand on the forks. Don't put any part of body below the cargo.
- 13.11 Do not lift loads with one fork!
- 13.12 The truck shall be used, serviced and repaired according to the manufacturer's requirements and shall not be modified or have attachments fitted without ensuring that the truck is still safe.
- 13.13 Do not use the hand pallet truck at an insufficiently illuminated place!
- 13.14 Do not park the hand pallet truck by turning the Handle!
- 13.15 Do not use the hand pallet truck as jack! Do not put any part of your body under a lifted load!
- 13.16 The extremity of fork arms shall not be used as a lever to lift a load!
- 13.17 It is forbidden to use the truck at places where a risk of unintentional movement exists.
- 13.18 It is forbidden to contact the truck with goods or cargo directly!
- 13.19 Do not use the hand pallet truck in a potentially explosive atmosphere!
- 13.20 During the operation of the hand pallet truck, the operator should pay close attention to the feet and any body parts close to the truck.
- 13.21 The truck shall be used, serviced and repaired according to the manufacturer's requirements.
- 13.22 Operators should be fully aware of their speed, slope, and weight of cargo. Heavier loads and higher speeds result in increased force necessary to safely stop the load from moving.

Parts Manual

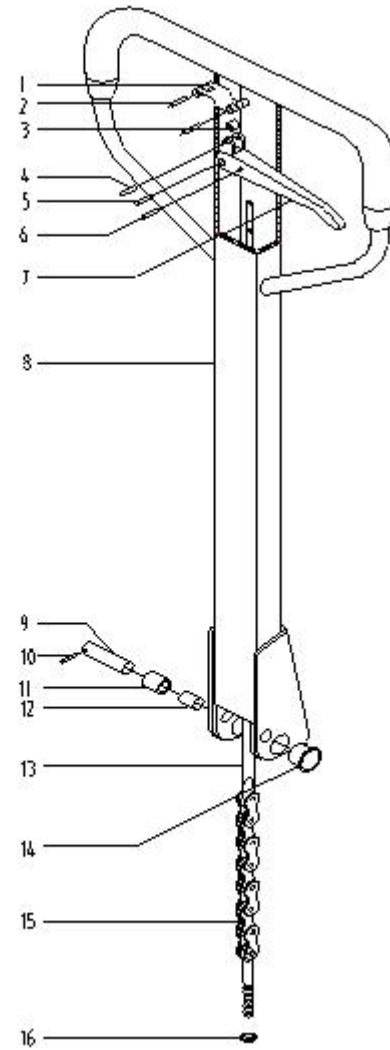
Frame



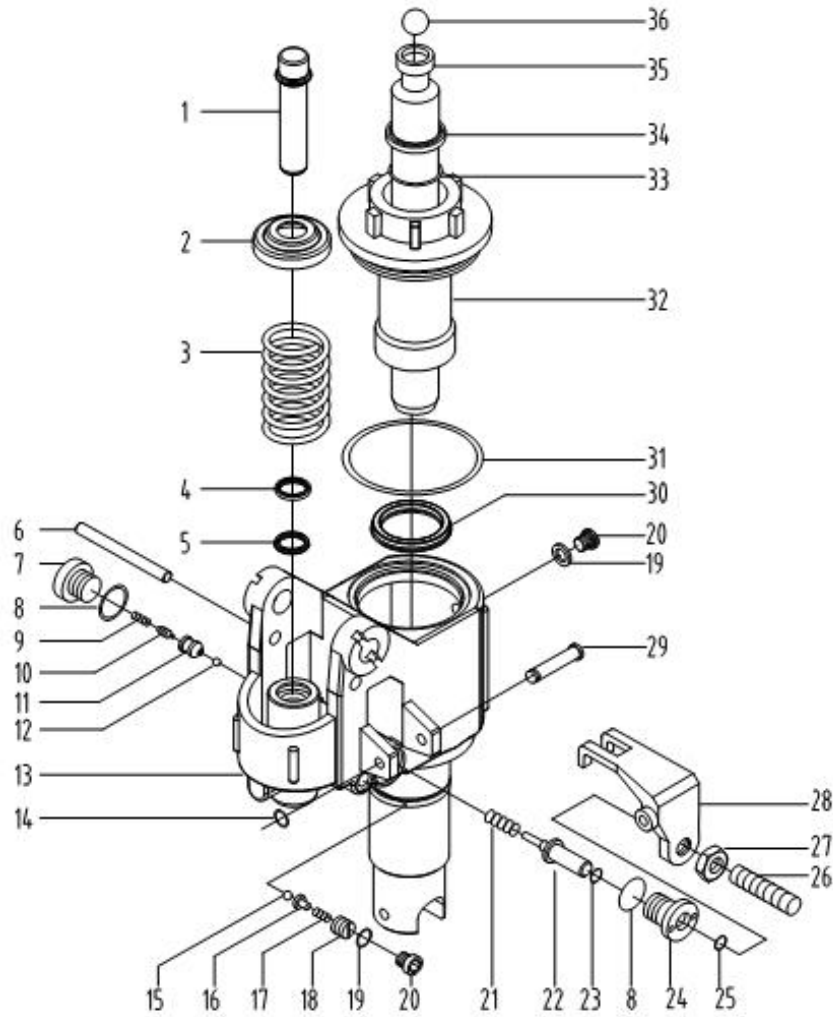
No.	Part No.	Description	Qty.	No.	Part No.	Description	Qty.
1		Handle Assembly	1	18		Major axis	1
2		Shaft	1	19		Circlips for holes-type 25	2
3		Spring pin5x35	2	20		Lubricating nipple M6	7
4		Pump Assembly - Standard	1	21		Deep groove ball bearing6003	8/16
5		Hexagon bolt M8x55	1	22		Fork wheel	2
6		Bearing	1	23		Wheel axle single 17X122	2
7		Supporting base	1	24		Spring pin 5X32	2/8
8		axle bumper 55	1	25		Supporting plate	4
9		Steer Wheel Assembly	1	27		Wheel axle double 17X95	4
10		Inner hexagon screw M6X12	1	28		Pin roll 16X85	2
11		Locknut M8	1	29		Pin roll 16X144	2
12		Pin roll	2	30		Wheel carrier	2
13		Rocker arm unit	1	31		Truck frame	1
14		Spring pin 5X28	2	32		Lubricating nipple 6	3
15		Coupling head	2				
16		Pin roll16X44	2				
17		Connecting rod unit	2				

Handle

No.	Part No.	Description	Qty.
		Handle Assembly	1
1		Locating plate	1
2		Spring pin4x30	2
3		Roller	1
4		Spring pin4x18	1
5		Spring pin6x30	1
6		Spring pin4x12	1
7		Hand knob	1
8		Handle body	1
9		Cylindrical pin	1
10		Spring pin	1
11		Pressure wheel	1
12		Bushing	1
13		Pull rod unit	1
14		Bushing	2
15		Chain	1
16		Nut	1
17		Lock Nut	1



Pump Assembly (Standard Pump – BFL10 Models)

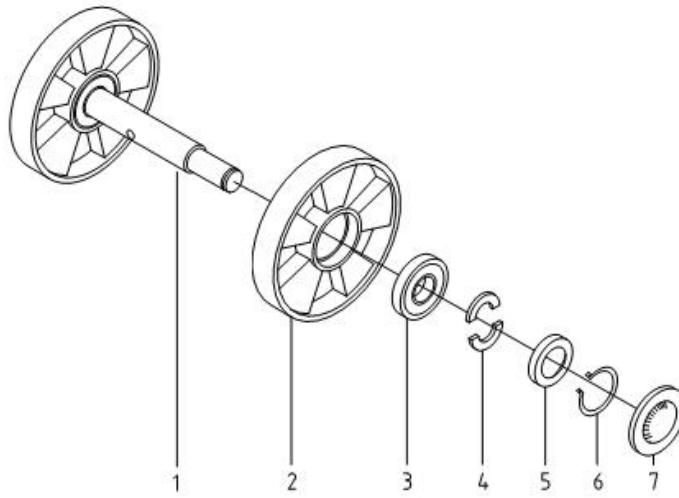


No.	Part No.	Description	Qty
		Pump Assy (BFL10)	1
1		Pump Core	1
2		Spring Cap	1
3		Spring	1
4	**	Dust ring	1
5	**	Seal ring	1
6		Lock rod	1
7		Plug	1
8	**	Combined Washer	2
9	**	Spring	1
10	**	Spindle of Valve	1
11	**	Seat of valve	1
12	**	Steel Ball	1
13		Base unit	1
14		Circlip for axle	1
15	**	Ball	1
16	**	Ball base	1
17	**	Spring	1
18	**	Screw	1
19	**	Washer	2

No.	Part No.	Description	Qty
20		Plug	2
21	**	Spring	1
22		Firing pin	1
23	**	O Ring	1
24		Firing pin seat	1
25	**	O Ring	1
26		Bolt	1
27		Nut	1
28		Lever board	1
29		Pin	1
30	**	Seal ring	1
31	**	O Ring	1
32		Cylinder cap	1
33	**	O Ring	1
34	**	Dust ring	1
35		Piston	1
36	**	Ball	1
**		Pump Seal Kit	1

** Items included in Pump Seal Kit

Steer Wheel



No.	Part No.	Description	Qty.
1		Shaft 25*176	1
2		Big Wheel 150*50	2
3		Bearing	
4		Half Circle Ring	
5		Washer	
6		Retaining Ring	
7		Hub Cap	