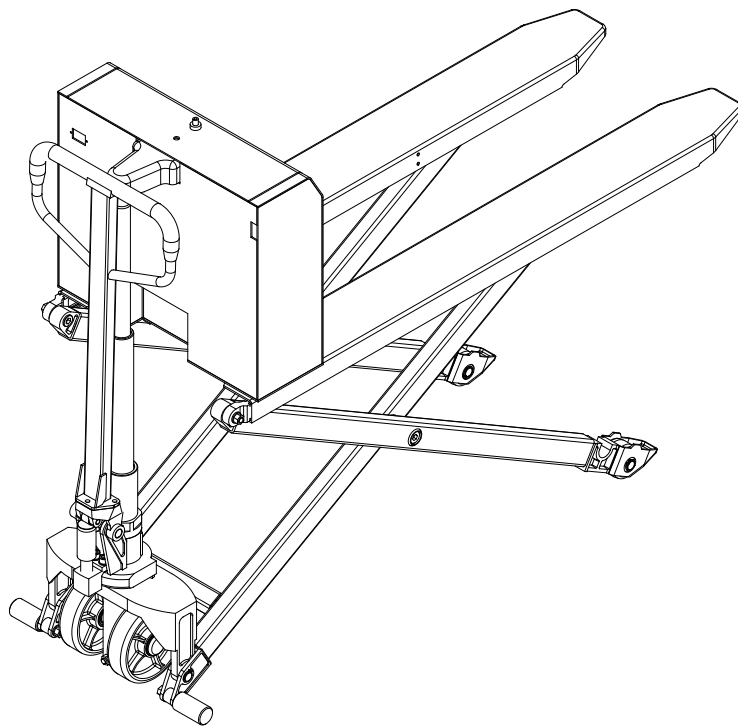


JFD8 Electric High Lifting Pallet Truck

Operation Manual

Original instruction





EC Declaration of Conformity



according to the Machinery Directive 2006/42/EC

For the following equipment :
Product : High Lifting pallet Truck
Type Designation /Trademark : JFD8

Refer to in this declaration conforms with the following directive(s):
Machinery Directive 2006/42/EC

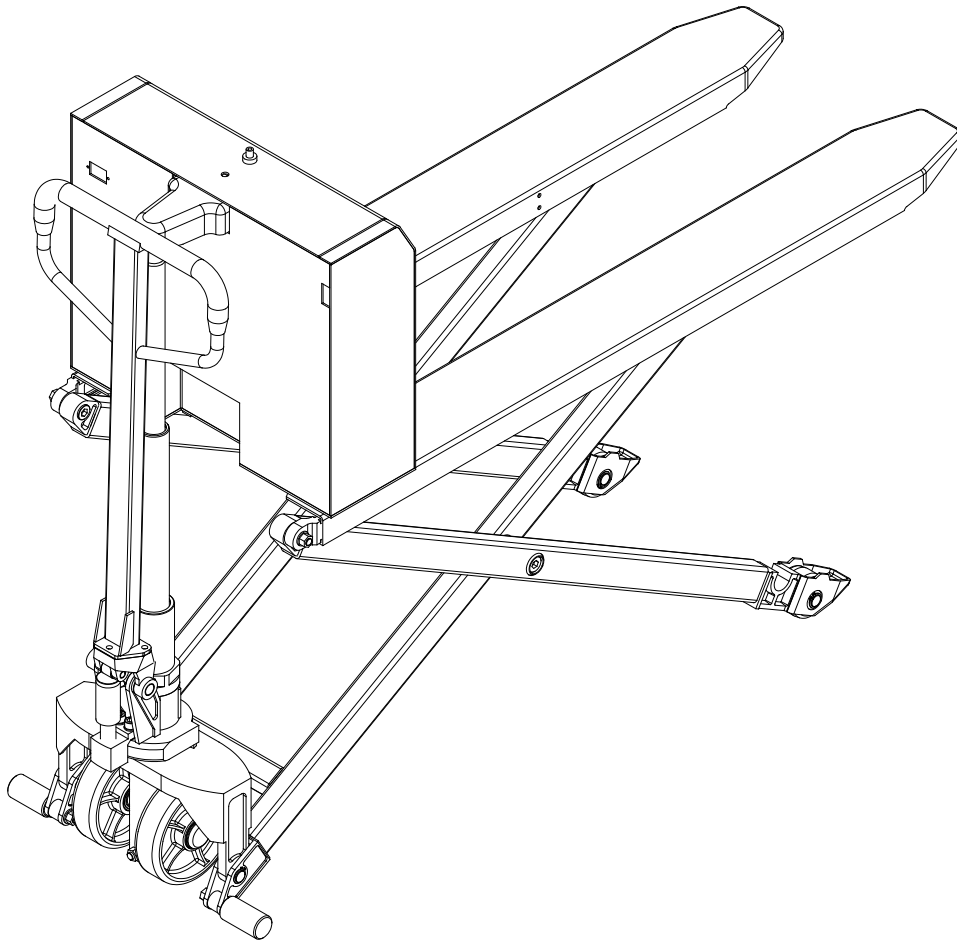
The company named above will keep on file for review the following technical documentation :

- Operating and maintenance instructions
- Technical drawings
- Risk assessment
- Description of measures designed to ensure conformity
- Other technical documentation ,e.g. quality assurance measures for design and production

Contents

1. Contour diagram	1
2. Main technical parameters	1
3. Applications	2
4. Vehicle assembly	2
5. Use and operation instructions	2
6. Maintenance	3
7. Trouble shooting	3
8. Maintenance and charge of the storage battery	4
9. Warning (points of attention)	4
10. List of accessories, spare parts and vulnerable parts	5
11. Structure diagram and principle diagram of the major parts	5
12. Packing list	7

1. Contour diagram



2. Main technical parameters

SN	Name	Unit	Parameters
1	Rated carrying capacity	kg	1000
2	Maximum lifting height	mm	800
3	Minimum height of fork	mm	85
4	Length of fork	mm	1245
5	Maximum width between both sides of fork	mm	550/685
6	Height excluding handle	mm	599
7	Diameter of steering wheel	mm	φ180×50
8	Diameter of fork wheel	mm	φ74×50
9	Power of the oil pump motor	kw	0.7
10	Voltage of storage battery	V	12
11	Capacity of storage battery	a·h	100
12	Noise lever	dB	<70
13	Service weight	kg	181/189

3. Applications

JFD8 electric high lifting pallet truck has two functions, namely, to transmit goods and to lift the goods to a certain height. It adopts storage battery as power supply and DC motor to provide dynamic force for driving the forklift table up and down by hydraulic drive motion. As a result, it possesses the features of smooth lifting and descending of the goods, labor saving, easy operation, safety and reliability, and so on. The porter is applicable for operation on hard and level ground or on platforms.

4. Vehicle assembly

For the needs of safe transmission and packing, the electronically controlled handle has been removed before the port is delivered, so before using it, users should firstly align the three interlock pores of $\phi 11$ under the handle to the three screw holes on the assembly surface on top of the lifting jack, connect and tighten the electric handle and the rack with three M10 \times 25 hex bolts and three ring washers, and then connect the electric socket under the handle to that on the rack. (See fig.1)

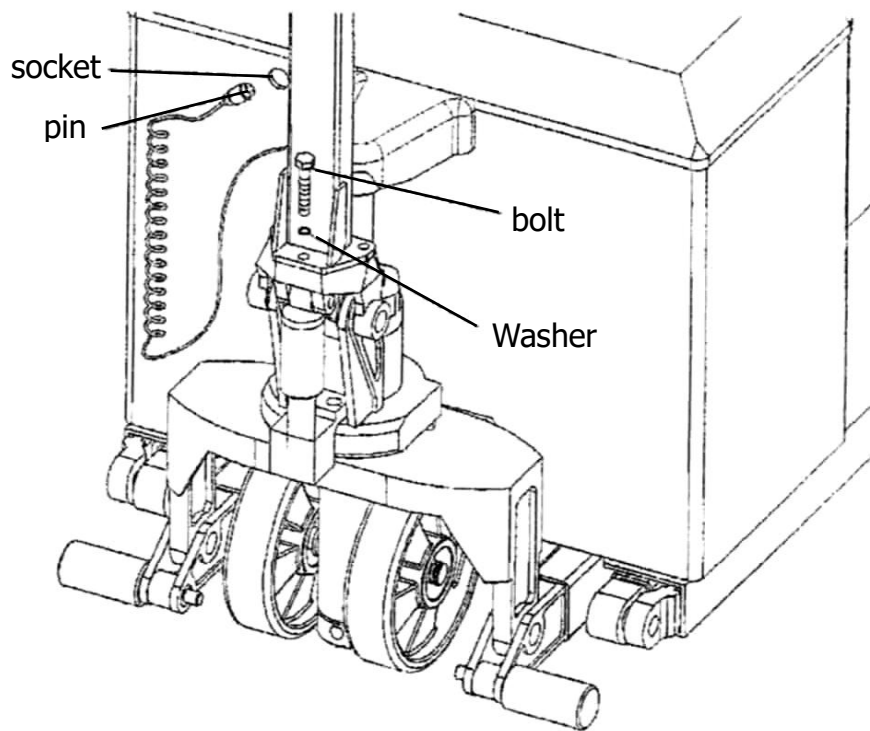


Fig.1

5. Use and operation instructions

The porter, while carrying goods, depends on the manual dragging or pushing force to move and lift the goods up or down, and the electric pump to move the oil cylinder up and down and lift the goods. Since it is an electric lifting, therefore, before operation, charge should be conducted as required (refer to item 8 for the concrete requirements of charge) and inspection should be carried out for the hydraulic pipelines and the connections as well as the power socket to make sure everything is normal. When loading goods, one should first unlock the electric lock, push the forks of the porter to a reasonable position under the tray of the goods (reasonable position range of the goods is 700mm from the bottom of the fork), press the lift button to lift the goods to the height suitable for walking, then pull the handle

to transmit the goods. While unloading the goods or piling up, press the lift button to lift the goods to the required height before withdrawing the goods from the fork, then press the descent button to descent the goods to the ground. If there is no need to lift the goods, press the descent button directly to put down the fork, then withdraw the vehicle from under the goods.

6. Maintenance

Whether the porter can operate satisfactorily depends on efficient maintenance. When maintenance is ignored, the porter may pose a threat to personal safety and cause property damage. Routine inspection should be conducted while the porter is in operation to eliminate abnormal conditions. Never use a porter with trouble to ensure safety and to prolong the service life of the porter.

- 6.1 Maintenance for mechanical system: Examine the firmness of the fixed fittings and the flexibility of the steering wheel, fork wheel and the control wheel, as well as whether the forks and crotches can be lifted and lowered normally.
- 6.2 Maintenance for electric equipment: Check whether the terminals are clean and adjust the specific gravity of the electrolyte as required. Clean the terminals and paint it with Vaseline before you tighten it properly. Check if the connections of the electrical devices are reliable, the switches are normal and the insulation is OK.
- 6.3 Maintenance for hydraulic system: Once every 12 months. Check if the oil cylinder is normal, if there is any leakage externally or internally, if the hydraulic connection and the hose are reliable without leakage. The hydraulic oil should be kept clean and generally it should be replaced every 12 months.

7. Trouble shooting

No.	Trouble	Cause	Solution
1	The forks cannot be lifted high enough	1) Overload	Reduce the load
		2) The pressure of the overflow valve is too low	Adjust it
		3) Insufficient hydraulic oil	Add appropriate quantity of filtered hydraulic oil
		4) Insufficient voltage of the storage battery	Charge the battery
2	The forks cannot return to the right position	The turning unit is deformed or blocked.	Replace
3	The fork cannot be lowered	1) The electromagnetic valve of the hydraulic station is out of control	Recover the failure of electromagnetic valve
		2) The vehicle rack or the part on the fork rack is deformed or damaged	Replace
4	The hydraulic oil leaks	1) Ineffective seal	Replace
		2) The connector of the pipe is loosened	Retighten

No.	Trouble	Cause	Solution
5	The forks cannot be lifted	The sockets of the electrical devices are not well plugged	Plug properly
		The line connecting the batteries is loosened or removed	Tighten
		The electric lock has not be unlocked or is damaged	Unlock or repair the lock
		The button switch is damaged	Replace
		Damaged oil pump motor	Repair or replace
		Damaged oil pump	Repair or replace
		Seriously insufficient voltage of the storage battery	Charge

8. Maintenance and charge of the storage battery

8.1 Change the battery

- 1) Pull the key off the electronic lock;
- 2) Open the battery cap;
- 3) Release the battery clip/clamp;
- 4) Disconnect the cable and the battery;
- 5) Take the battery out of the car;
- 6) Install a new battery and insure the replacement is positioned exactly as the old one;
- 7) Check the polarity and then connect battery and cable;
- 8) Secure the battery with battery clamp;
- 9) Close the battery cap;
- 10) Turn on the power, run and check the car.

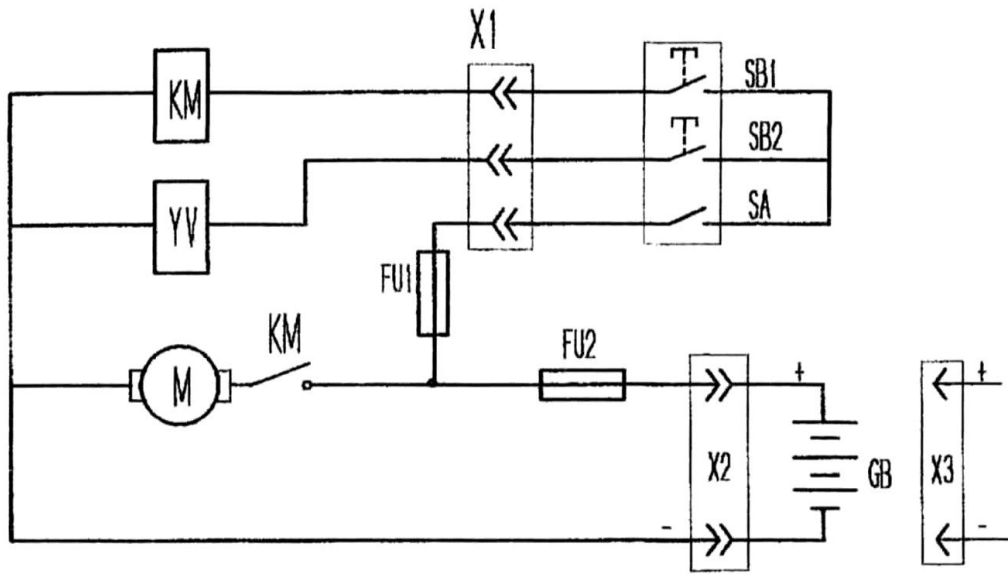
8.2 Charge the battery

- 1) Charge the battery immediately when the battery indicator is on;
- 2) Close the battery lock and plug one end of the battery charger to the car charger, and the other end to the power, then start charging;
- 3) When the battery indicator is green, the battery is fully charged, unplug the charger and the car is ready.

9. Warning (points of attention)

- 1) Read the manual carefully before operation and know well the performances of the porter.
- 2) It is strictly forbidden to press the lift or lower buttons while the porteries walking and frequently switching the two buttons, which might damage the porter and the goods.
- 3) It is not allowed to rapidly put heavy goods onto the forks.
- 4) The porter should not be overloaded.
- 5) The center of gravity of the goods should be placed between the two forks, otherwise, the forks will be in danger.
- 6) Loose and unstable goods are not allowed to load onto the porter.
- 7) Do not put the goods on the forks for a long period of time.
- 8) When the height from the fork to the ground exceeds 200mm, do not pull the porter.
- 9) When the porter is not in use, the forks should be lowered to the lowest position.

- Electric schematic diagram



12. Packing list

The Packing List of JFD8 Electric High Lifting Porter

Consignee:

Ex-work No.:

Contract No.:

Ex-work date:

NO.	Name	Quantity	Net weight	Dimension (L×W×H)	Remarks
1	JFD8 electric high lifting porter	1			A complete set.
2	Accessory box	1			Technical documents, accessories and spare parts.

1) The following documents are in the technical file bag:

- a) Operation manual 1 volume
- b) Packing list 1 copy
- c) Qualification certificate 1 copy

2) Accessories and spare parts

NO.	Name	Type & specification	Quantity	Remarks
1	Key to the electric lock		2	
2	Charging plug and socket		1 set	
3	Fuse	10A	1	
4	Fuse	160A	1	
5	Sealing ring	UN48	1	
6	Sealing ring	UN35	1	
7	Dustproof ring	DH48	1	
8	Dustproof ring	DH35	1	

Consignor: